

aha  
**Moment**  
*official newsletter of the Association of Hawaii Artists*

**September 1, 2022**



**Fank Oliva** - "Pink Thermal I" from Rewind ~ Fast Forward at The Arts at Marks Garage (see page 4-5)



# ARTicles

Letter from the Editor,

Aloha,

Changes have happened. First, I want to thank **James Hsu** and **Sherree McKellar** for the time and effort they have given to the **Association of Hawai'i Artists**. **James** stepped down as Treasurer in June because of a job opportunity. And **Sherree**, who scheduled several workshops this year, will not be continuing as our Workshop Chair. And so, members, if anyone has a little time to spare to our organization in either capacity, please let me know at: [ahaartistcommunication@gmail.com](mailto:ahaartistcommunication@gmail.com).

**AHA** is in the planning stages for two exhibit opportunities later this year. The annual Miniature Show is slated to return in November after the pandemic shutdown. Also, dare we call it a second annual, **AHA** will have one week at The Arts at Marks Garage in December. Last year's "The Present" was only the second time **AHA** was able to publicly hang work since COVID became a household word.

Details on both events will be emailed to members once all the t's are crossed, etc. Meantime, may you all be healthy, happy and creative!

Mahalo,

**Edd** the Edditor

Welcome to our newest members:

**Carrie Brown**  
**Corinne Gallardo**

COVER: **Frank Oliva** comments about the 21st Anniversary show at The Arts at Marks Garage: "Before I ever presented a painting at Mark's Garage, I enjoyed the First Friday events in the early 2000s with several galleries open featuring art often with tastings and music. The ARTS at Marks was always a highlight of the monthly experience.

I have enjoyed having my paintings exhibited since there beginning with "36 views of Leahi" in 2014. My 2021 submission "Pink Thermal I" was painted because of my interest in celestial bodies: stars, planets, cosmos."



## AHA Membership / Renewal Form Jan 1 – Dec 31, 2022

(Membership period is for calendar year 2022. We do not adjust for partial-year enrollments.)

Date: \_\_\_\_\_ New Member \_\_\_\_\_ Renewal

\_\_\_\_\_ \$36 Annual Regular Member

\_\_\_\_\_ \$18 Annual Full-Time Student

Name: \_\_\_\_\_

Street Address \_\_\_\_\_

City, State, Zip \_\_\_\_\_

Telephone \_\_\_\_\_ E-Mail \_\_\_\_\_

WEBSITE \_\_\_\_\_ NO \_\_\_ YES \_\_\_

I wish to have my website listed on **AHA's** website Members Directory page.

Please make your check out to **Association of Hawaii Artists** and make a notation that it is for "membership dues." Or pay by PAYPAL at <https://associationhawaiiartists.com/join-the-aha/>

Volunteer Interests? Please check any items that you might like to help us with: We will contact you!

\_\_\_\_\_ Programs and Workshops

\_\_\_\_\_ Exhibits

\_\_\_\_\_ Newsletter

\_\_\_\_\_ Publicity

\_\_\_\_\_ Social Events, Functions

\_\_\_\_\_ Hospitality

MAIL TO:

**Association of Hawaii Artists**

**P O Box 37605**

**Honolulu, HI 96837**

## Coming up

thru **September 18** "Halcyon", an exhibit curated by Dexter Doi and Carol D'Angelo at the Honolulu Country Club, 1690 Ala Puumalu St. This show includes four current AHA members.

# HALCYON

**AUG. 7 - SEPT. 18, 2022**

thru **September 10**

**AHA** member **MaryAnne** Long

as well as Life Member **Helen**

**Iaea** are included in an

exhibit "Grief Poured Into My Heart:

Stories of Grief, Hope and Love," at the

Downtown Art Center from August 30 to

September 10. This show celebrates

of the launch of the new DACArts Magazine

and separate book project on coping

with grief.

KEALOHILANI AHAI

ROBERT DUSENDSCHON

HARUMI FUJIMOTO

MIN CHONG KIM

SOOKI KIM

TAE JA KOKI

MARINA LEVY

ALLA PARSONS

ROMEO PASION

BETSY POULOS

MADALYN PURCELL

TERESA SHEA

WARREN STENBERG

DAWN YOSHIMURA

## September 1 - October 1

**AHA** member **MaryAnne Long** curated REWIND~FAST FOR-

WARD to celebrate the 21st Anniversary of The ARTS at

Marks Garage. The exhibit defines Marks Garage as the most

inclusive arts incubator in Honolulu, introducing a myriad of

emerging artists over the years, many of whom have gone

on to pursue phenomenal careers in the arts. This show in-

cludes members **Edd Tokarz Harnas**, **Frank Oliva** and

**Frances L Wong**. The Arts at Marks Garage is open Tues-

day through Saturday, Noon to 5.



# Coming up

**September 2** First Friday Reception for Rewind ~ Fast Forward from 5 to 8PM, the Arts at Marks Garage, 1159 Nuuanu Avenue.



**Frank Oliva** -  
"Leahi Oki  
Namaura"

**September 2** Reception for "Grief Poured Into My Heart: Stories of Grief, Hope and Love," at the Downtown Art Center 1041 Nuuanu Ave., (Second floor) from 5:30-8 PM.

**September 2 - 29** Pastel Artists of Hawai'i presents their open juried show "The Beauty of Pastel" plus additional work at Ho'omaluhia Gallery, Kaneohe.

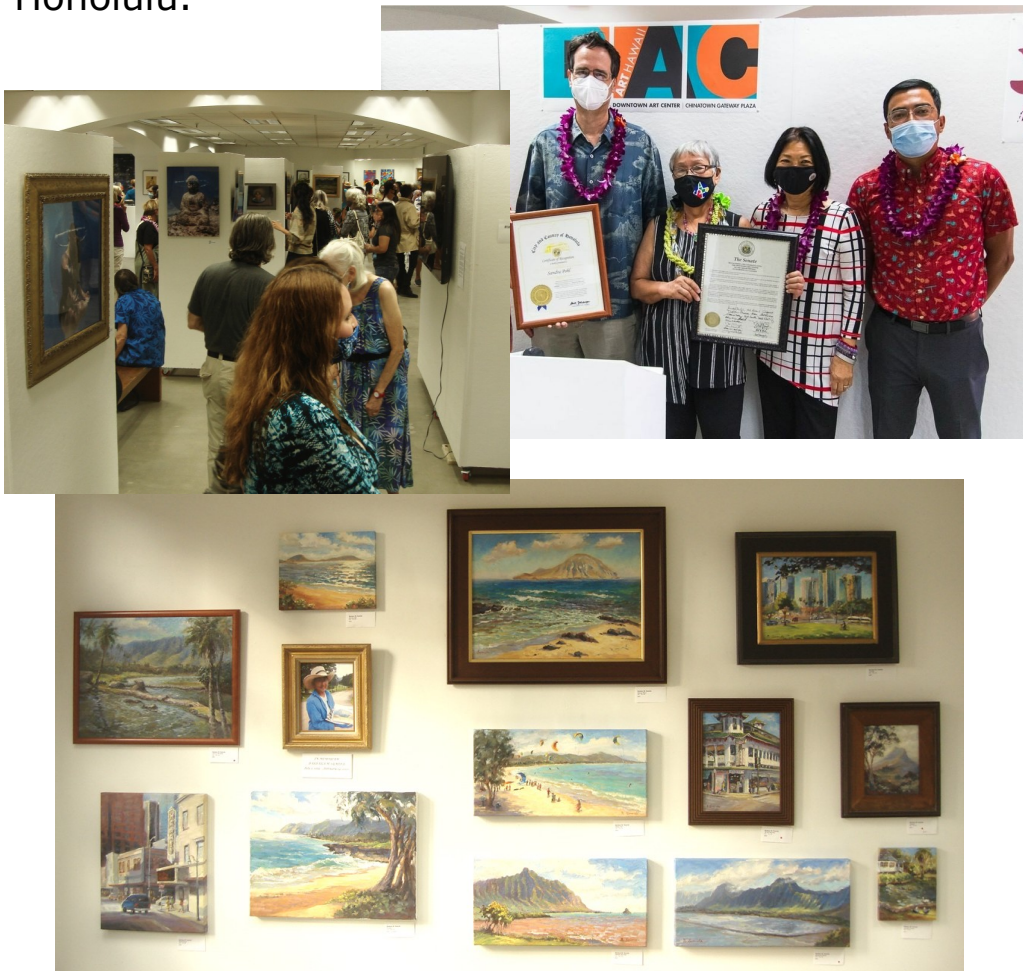
**September 4** Reception for "Courage Poured Into My Heart" at the Downtown Art Center 1041 Nuuanu Ave., (Second floor) from 1-5 p.m.

**September 4** Opening reception for Pastel Artists of Hawai'i "The Beauty of Pastel" at Ho'omaluhia Gallery, Kaneohe from 2 - 3:30 pm.

# Coming up

**September 6 - October 22** Infinite Night, Photography by Stan Honda. Honda has been an artist-in-residence at various national parks including Haleakala which will be highlighted in this exhibit. Schaefer International Gallery, Maui Arts and Cultural Center, 1 Cameron Way, Kahului.

**September 9** A celebration of the accomplishments, supporters and friends from DAC's first two years. \* RSVP to [executivedirector@downtownarhi.org](mailto:executivedirector@downtownarhi.org). 5 - 8 pm. 1041 Nuuanu, 2<sup>nd</sup> floor, Honolulu.



Top left: June 2021 show crowd; top right: DAC's Grand Opening, bottom: work by the late **Barbara Sumida** at DAC in 2021

# Coming up

**September 25 Dwayne Adams** will be teaching a six-week Watercolor class at the Downtown Art Center starting September 25. The class runs from 1 until 3:30 pm and is limited to 12 students. **Adams** says the class is geared to beginner or intermediate watercolor artists. Sign up on the Downtown Art Center website: <https://www.downtownarthi.org/classes>.



A sample watercolor by **Dwayne Adams**

**September 30** Final Friday Reception for Rewind~Fast Forward from 5 to 8PM, the Arts at Marks Garage, 1159 Nuuanu Avenue.

**through October 8** "New Works 2022" with Wayne Levin, Toni Martin and Lonny Tomono at Cedar Street Galleries, 817 Cedar Street.

**November 2022** AHA Miniature Show at Ho'olumahia Botanical Garden. Details in a future email to AHA Members.

**December 8 - 14 AHA** at The Arts at Marks Garage. Details in a future email to AHA Members.



**40 years ago...**

**1982-0201** George Ellis becomes the new Director of the Honolulu Academy of Arts.

**1982-0200** February Paint Rag reports: "An interesting off-shoot of **May Sewell's** plans for the Christmas party was the beginning of a list of past-presidents of the club. Since we understand that our roots go back to the year 1946, we should have names dating back to that year. The closest we come to it is 1954 which is when **Frank Nicholson** is supposed to have held that office. There is also a large gap between 1954 and 1962, plus blanks for 1967, 1973, 1974 and 1976 waiting to be filled in. The following persons are believed to have been president at one time or another, but no one knows when exactly: **Roy King, Alice Lewbel, Gertrude Arrida, Col Charles E Marek, Teddie Scholz, Madge Tennet** and **Shirley Russell...**"

**1982-0212** Party at **Shirley Bean** residence in honor of new Life Member **Chris Evans**. Normally, a new Life Member would be honored at the Christmas Party, but the 1981 party was cancelled due to lack of interest.

**1982-0216** General Meeting, Roosevelt High School, 6:30 pm. **Patric** did a portrait workshop. **Ruth Pistor** got the best of theme certificate for a "powerful pastel portrait".



**1982-0301-0331** A Retrospective-Paintings by **Sunao Hironaka** at Territorial Savings and Loan, Financial Plaza. The Star Bulletin/Advertiser did an article on **Sunao** on March 21.

**1982-0306-0313** "A Prelude to Spring" Exhibit, Ala Moana Center, juror Joseph Feher. Reception March 5 from 6 - 9 pm. 96 artists entered 279 pieces; 17 of the entrants were new members. Juror's Choice awards (\$100 each) to **Catherine Dzialo-Haller, Bernard Moriaz** and **Teddi Scholz**. Awards of Merit to **Saburo Aragaki, Barbara Britts, Anne Moses, Sabra, Brigitta Sundling** and **Tony Walholm**.

**1982-0419-0507** Honolulu, Its People and Places, included **Mary Leinewer** and **Ramsay**, at Honolulu Hale. Reception on April 19.

## PAGE FROM THE PAST...

9

**1982-0518** General Meeting, Kaiumuki Library, 6:30 pm. **Lynne Smith** painted a portrait. Theme for the evening: An Expression of Passing Years.

**1982-0612** Frankie Joyce Morton dies

**1982-0615** General Meeting, Kaimuki Library, 1041 Koko Head Ave, 6:30 pm. Paint-In with still life and models. Theme was "Unusual Lighting".

**1982-0716-0813** 12<sup>th</sup> Annual Aloha Show (General Exhibit 1<sup>st</sup> part), Prince Kuhio Federal Courthouse Building, juror William J Hixson. Reception July 16 from 5 - 7 pm. There were 338 entries, with 262 getting in the show; 174 in the general section and 88 in the themed section. Best of Show, **Sunao Hironaka** "Thadeus and Carthaginian". The juror, without knowing whose it was, called it an "honest painting" marking **Sunao's** first Best in Show award in his long career. Miscellaneous awards went to **Harper Richards, Ke'ruth Tyau, Caroline Warner, Lori Uehara, Hwa Ja Park** and **Ed Higa**. The September Paint Rag stated there was an initial report of a \$959.64 loss from the show!

**1982-0700** July Paint Rag reports **Sunao Hironaka** was invited to submit two works for the International Exposition at the Paris American Academy.

**1982-0702-0730** Watercolors by **Pat Hein** at Territorial Savings and Loan, downtown.

**1982-0720** General Meeting, Kaimuki Library, 6:30 pm. Guest speaker, photographer David Davis.

**1982-0800** August Paint Rag: "Da Bum's Rush: The following is a letter signed by Donna Stoner, Director of the AMFAC Plaza Gallery, in answer to our application for an AMFAC show date next year:

'Dear **AHA**, -- The Advisory Board has met and I regret to inform you that your application for a members' exhibition in Amfac Plaza Exhibition Room has not been accept for 1983. The Board feels that because there is no criteria for membership in **AHA**, that a membership show would be uneven in quality and not commiserate [sic] with the present directions of the Exhibition Room. Also, with so many bone fide [sic] media organizations now functioning in the art community here, the trend in the Exhibition Room is leaning away from multi-media shows. In order to keep the year varied, the Board feels we can accommodate only one to two such exhibitions per year... On behalf of Center Properties and the Plaza Advisory Board, I wish to thank you for your application and to extend my best wishes for a successful year... Very truly yours, signed Donna Stoner'.

"Editor's Note [**Caroline Warner**] (The following opinions are those of Ol' Ed, which may or may not reflect the views of **AHA**.) The two principle reasons given for our rejection are 1) the fact that we have no "criteria" for membership (pray tell, who does?)\_ and 2) ours is an all-media show. These add up to pretty lames excuses in my book since 1) we had offered to open our 1983 show (just to please Ms. Stoner) in which case the quality of the show is determined by the juror. Certainly the **AHA** goes to as much expense and trouble as anyone to secure the services of competent, unbiased judges. 2) Four of the 1982 Amfac shows were, in fact, multi-media shows... Ever since the **AHA** was seemingly black-listed at Amfac, I have staved off suspicions of "personal vendetta" by coming to Ms Stoner's defense: "People in her position wouldn't be so small as to punish a whole organization for the mistakes of 1 or 2 (mind you, I'm not saying there were any mistakes)..."



## PAGE FROM THE PAST...

10

"Now after reading this letter, I can only say it's probably just as well that Ms. Stoner will be leaving Amfac soon. Maybe her replacement will realize that in an organization of our size and structure, each year brings new people and a new modus operandi. In considering us for an exhibit, Amfac's "criteria" should rest on the fact that it was the **AHA** that opened the Amfac Gallery years ago. Over the years, we enjoyed a good relationship, with our annual Aloha Exhibit becoming an Amfac tradition. Based on this, shouldn't we at least talk it over?" (an update occurs at the Sept 19, 1982 Board meeting)

**1982-xxxx-0815** Oil paintings by **Jean Kubota** at Territorial Savings and Loan, Ala Moana.

**1982-0803-0830** Retrospective of the late **Frankie Morris** and works by **Chris Evans** at Territorial Savings and Loan, downtown.

**1982-0809-0815** Paintings by **Betty Jenks**, Kahala Mall.

**1982-0821** General meeting, Ward Centre, 1200 Ala Moana, 100 am. - 4pm. Paint Out.

**1982-xxxx-0914** Watercolors by **Barbara Britts** and **Jewel Lafferty** Honolulu Press Club, 12 South King Street.

**1982-xxxx-0930** Watercolors by **Roy Hewetson** at Territorial Savings and Loan, Financial Plaza.

**1982-xxxx-1019** Prints by **Wren** at Territorial Savings and Loan, Ala Moana.

**1982-0911** Watercolor portraiture workshop with **Pat Hein** at Ward Warehouse workshop.

**1982-0913-0917** Paintings by **Betty Jenks**, Davis Pacific Center.

**1982-0918** Board Meeting, La Mancha Restaurant, 9 am. **Caroline Warner** read a letter from Toby Gilje, assistant VP of Amfac regarding the controversy in August over **AHA's** rejection for 1983. Gilje pointed out Amfac is owned by Center Properties, which has opened the plaza for art shows over the past 10 years, free of charge. Amfac Center Manager Jim Martin explained a volunteer art board selected who got to use the Plaza. Gilje thought perhaps an appeal system could be developed by art groups who were turned down. The Plaza's new director Anne Miura then wrote, "As an artist, I appreciate the importance of exhibit space and as a relative newcomer to the art scene, it is to groups such as yours that I owe a debt of gratitude. Organizations such as the **AHA**, the HAL and the Honolulu Printmakers have served as a catalyst within the community. The interest they have generated has resulted in the formation of scores of new art groups -- now in excess of 70." **Warner** however said Miura pretty much underscored the previous comments by Stoner: 1) Amfac has to give everybody a chance, 2) "The more prestigious groups...such as the **AHA**" should try to solve the problem within their own memberships encouraging other properties to initiate gallery space. **Warner** pointed out in the article that the current and previous Boards have wrestled with exhibition space.

## PAGE FROM THE PAST...

11

**1982-0923-1031** Prints drawings and monotypes by **John Young** at Academy's Graphics Gallery.

**1982-0929-1015** 12<sup>th</sup> Annual Aloha Show "Summer Dreams", (Themed Exh, 2<sup>nd</sup> part) Honolulu Hale, juror: William J Hixson. Reception Sept 20 at 7 pm. Best in Show, **Les Honda**, "Butterflies and Unicorns" with other awards to **Richard Melcher**, and **Hwa Ja Park**. Co-sponsored by the Arts Council of Hawaii. Art demos, part of the exhibit, featured **T K Chan, Peter Hayward, Lau Chun, Rose Burch, Cy Lemmon, Pat Hein, Shirley Bean** and **Ed Higa**.

**1982-0929** Unveiling of **Ramsay's** 75<sup>th</sup> Anniversary drawing of the Plaza Hotel in New York.

**1982-1016** Board Meeting, La Mancha Restaurant, 10 am. It was pointed out that the Paint Rag cost an average of \$78.17 per page to produce.

**1982-1027** General Meeting, Kaimuki Public Library, 6:30 pm. O'Daniel Van Zyle was rebooked to do a presentation on "Selling Yourself".

**1982-1118** General Meeting, election of officers and a program with **Cynthia Hilsinger** on "Formulating a Logo Design".

**1982-1205** Autograph party with Arthur Tennent for his book "Madge Tennent, My Mother" 4-6 pm at Tennent Art Gal-

**1982-1214** waiian Monach person, Guest of Board and reps tisers.



lery, Prospect Ave. Christmas Party, Ha-Hotel, 7 pm. \$10 per honor were the new from Paint Rag adver-

**Caroline Warner, Helen Iaea, Walter and Gloria Foss**  
at Spring Prelude show, March 1982.



## Honorable Mentions



**MaryAnne Long**, with Elizabeth O'Brien, curated the very successful "What's Your Sign" exhibit in August at the Arts at Marks Garage. Included were **Liz Corbin**, **Edd Tokarz Harnas**, **Wendy Roberts** and **Frances L Wong**.

**Frances Wong** at "What's Your Sign" opening reception, Arts at Marks Garage.



**David Friedman** recently completed "Capitol" which asks: This way or that? Left or right? Sooner or later? There are multiple points of view.... perspectives. What is the context? Are there extenuating circumstances? Not to mention

"alternate realities". **Friedman** offers alternate titles 1. "The Peoples House of Many Colors" or... 2. "Crime Scene: January 6, 2021".

[www.DavidFriedmanArt.com](http://www.DavidFriedmanArt.com) |



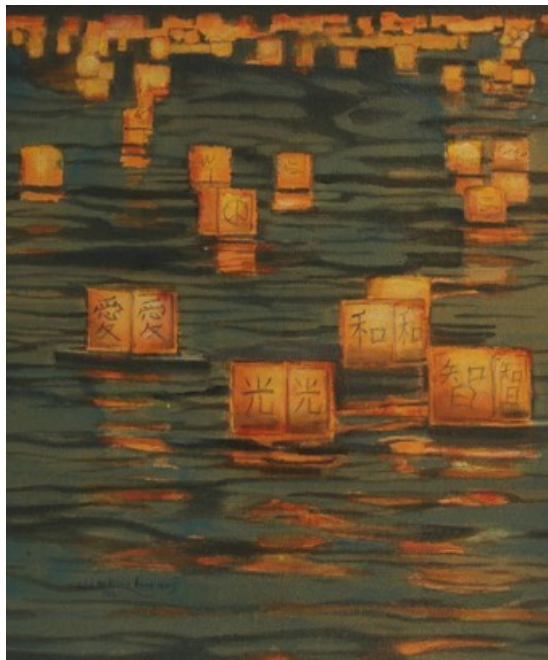
**David Friedman** - "Capitol"

## More Honorable Mentions

**Edd Tokarz Harnas** was one of twenty artists participating in the “Finding Light” exhibit at West End Gallery, Corning, NY from June 17 until July 14. The gallery said the theme focused on, especially in recent years, many unexpected challenges, uncertainty, loss, and those who have found themselves in a dark place. This exhibit was to help serve as a reminder that people are not alone in their experiences, and that even in the darkness we can find light...and hope”.

**Harnas’s** piece is a pencil and acrylic tribute to the floating lantern ceremony that takes place on Memorial Day in Hawai’i.

**Harnas** - “Toro Nagashi”



**Candace Fenander** was honored as part of the Hawaii Watercolor Society Open Show in August at the Downtown Art Center. Besides being a member of **AHA**, **Fenander** was active with HWS and Pastel Artists of Hawaii.

FOR THE LOVE OF CREATING  
AUGUST 2-27, 2022



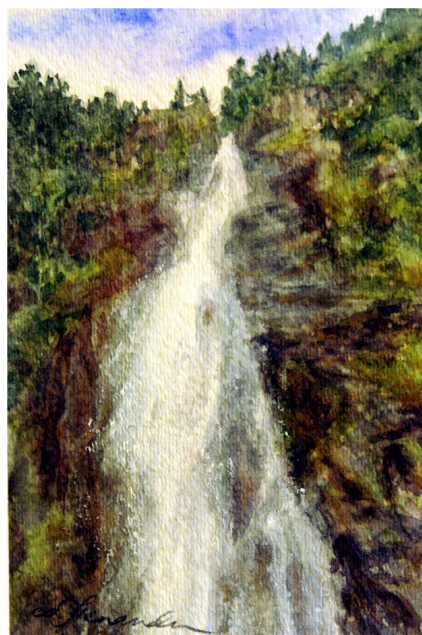
FEATURING  
THE LEGACY OF CANDACE FENANDER  
THE 2022 HAWAII WATERCOLOR SOCIETY JURIED OPEN SHOW,  
AND INVITED ARTISTS FROM PASTEL ARTISTS OF HAWAII & HAWAII GLASS

Downtown Art Center  
1041 Nu'uuanu Ave, 2nd Floor Exhibition Space  
Tuesday - Sunday, 11 AM - 6 PM  
DOWNTOWNARTHOURS

Pastel Artists of Hawaii  
Promoting Pastels as a Fine Art Medium in Hawaii

DAC

HWS  
HAWAII WATERCOLOR SOCIETY



**Candace Fenander** - “Taba Inlet Waterfall”



## More Honorable Mentions

**Linda Umstead** will be in Flagstaff, Arizona for a residency during the months of September and October. She will be showing work at the Flagstaff Art Center, 17 N San Francisco St in downtown Flagstaff. **Umstead** has assembled a selection of original watercolor paintings for display there and will also be teaching a private botanical watercolor workshop in Sedona.



ings for display there and will also be teaching a private botanical watercolor workshop in Sedona.

**Linda Umstead** - "Eucalyptus Pod" (above), "The Stand" (left), "Snowbank" (below)





## More recent news..

15

"Celebration of Aloha" to benefit Malama o Na Keiki was held the last weekend of August at the Mid Pacific Country Club in Kailua. And **AHA** was there as part of the art exhibits. Participating were **Liz Corbin, Sherree McKellar, Frank Oliva** and **Wendy Roberts**.





## Recent Work from Association of Hawaii Artists



**Kenji Honda** - "Abstract #2207"

From a very hot Arizona, **Kenji Honda** submitted an acrylic abstract on a transparent glass. **Honda** says he uses it as an illumination light cover in his living room. An LED light is put behind this 8x10 painted glass. "It is very nice to watch the painting this way," he writes.



**Edd Tokarz Harnas** - "Agatha is Agnostic, Joan is Not Amused" shown at What's Your Sign, the Arts at Marks Garage

# More recent work from AHA members



Liz Corbin's work in "What s Your Sign," Arts at Marks Garage



## More recent work from AHA members

18



**Teresa Shea** - "Ballerina Moon" (oil on aluminum)



**David Friedman** - "Lanikai Beach Access"



### **On the Closing of Island Treasures Art Gallery - Aug 19, 2022**

"Last night was the closing party for Island Treasures Art Gallery in Kailua.

The event was historic with a lively and devoted crowd of art lovers, artists, collectors, visitors and residents. The event was ironic as it was both a celebration and a funeral, a party and a parting. It is a tragedy that Island Treasures is leaving.

It is sad, to me and many others, that Alexander & Baldwin could not find a viable and equitable path that would honor, support and sustain this outstanding local Gallery. Instead, I believe A & B acted poorly and squeezed out a uniquely valuable and broadly valued cultural Kailua asset with extreme fiscal and lease requirements.

Losing Island Treasures is a major professional setback for scores of artists and artisans, for art appreciators and collectors. Its absence is a great loss to the creative profile of Kailua. I know that "progress" marches on and Change Happens.

Still, I consider A & B to be "cultural assassins" and I think that they owe Kailua a serious apology.

Thank you Island Treasures for your service to Art, Artists and to Kailua.

You will be missed."

**David Friedman**, Kailua





## More from Prelude to Spring, 1982...



Above: **Teddi Scholz** and **Shirley Bean** (President);

Right: **Roy Ichishita** (Vice President), **Caroline Warner** (former VP and Life Member)



**If you have comments, questions or concerns to be brought before the AHA Board,  
please email: [ahaartistcommunication@gmail.com](mailto:ahaartistcommunication@gmail.com).**

### Officers & Board of Directors

Edd Tokarz Harnas, Pres./  
Historian

MaryAnne Long, Secretary

Jessica Orfe, Exhibition

Liz Corbin, Hospitality

Bessie Jacinto, Membership

**AHA Moment**

**Vol. 4 No. 5**

**Next Newsletter published November 1, 2022.  
Deadline to submit your info is Sunday, October 23rd.  
to [eddharnas@hawaiiantel.net](mailto:eddharnas@hawaiiantel.net)**